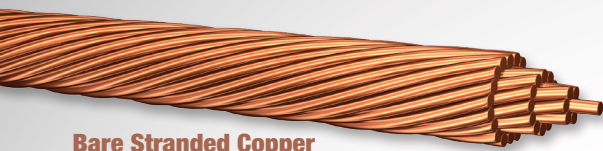


# Utility Products

All products listed below are available in both aluminum or copper conductors unless otherwise specified.

[ CLICK ON PRODUCT TO LEARN MORE. ]



**Bare Stranded Copper**



**THHN/THWN-2**



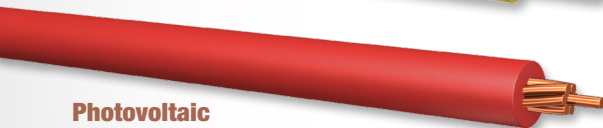
**XHHW-2/RW90**



**USE-2/RHH/RHW-2**



**Tracer Wire**



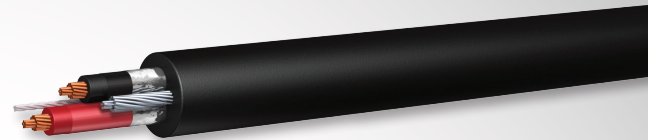
**Photovoltaic**



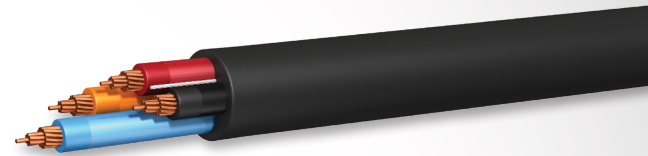
**Underground/Secondary Distribution Cable (URD) - 600V**  
Duplex, Triplex, and Quadruplex constructions available in 1350 Alloy and 8000 Series; Aluminum only



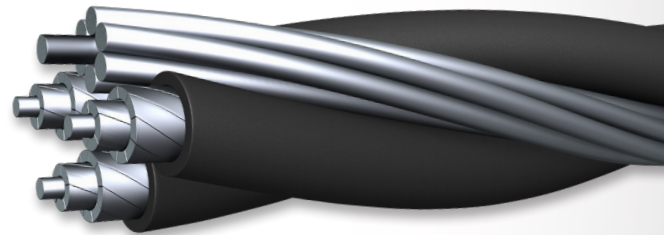
**MC - PVC Jacket (AIA) THHN/XHHW-2/RW90 Inners**  
With or without a PVC jacket



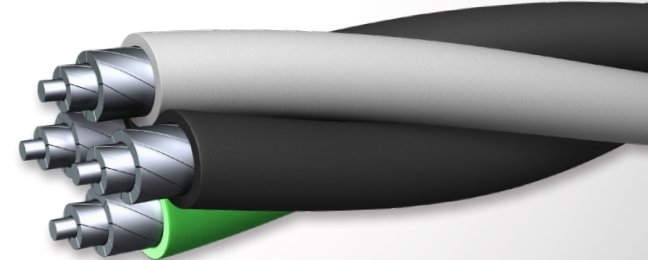
**Tray Cable - Control or Instrumentation - Shielded - THHN/XHHW-2/RW90 Inners**  
Available in 18 AWG-2 conductor through 10 AWG-12 conductor; Copper only



**Tray Cable - Power and Control Cable - THHN/XHHW-2/RW90 Inners**  
Copper conductors available in 14 AWG-2 through 750 KCMIL-4, Aluminum conductors available in 6 AWG and larger; Copper only



**Overhead Service Drop Cable (OH) - 600V**  
Duplex, Triplex, and Quadruplex constructions available in 1350 Alloy; Aluminum only



**Mobile Home Feeder (MHF) - 600V**  
Available in 8000 Series; Aluminum only

PRODUCT LINE



**ENCORE WIRE®**

SuperSlick Elite® Manufactured under Patent No. 8,658,576



**SmartSun®**

**SMART COLOR id®**