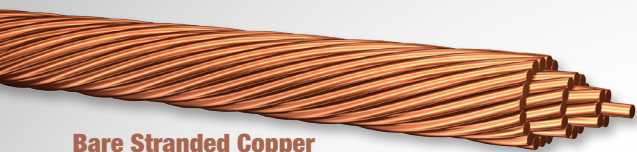


Commercial Construction Products

All products listed below are available in both aluminum or copper conductors unless otherwise specified.

[CLICK ON PRODUCT TO LEARN MORE.]



Bare Stranded Copper
Available in Barrel Packs



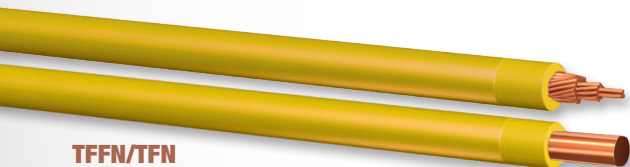
THHN/THWN-2
Available in Barrel Packs



XHHW-2/RW90
Available in Barrel Packs



USE-2/RHH/RHW-2
Available in Barrel Packs



TFFN/TFN
Available in Barrel Packs; Copper only



Striped Wire
Available on any single conductor wire type and in Barrel Packs



MTW
Available in Barrel Packs



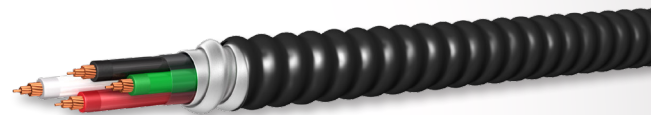
MC-LED™ (Type MC-PCS) Lighting Cable
Aluminum or Steel Armor; Copper only



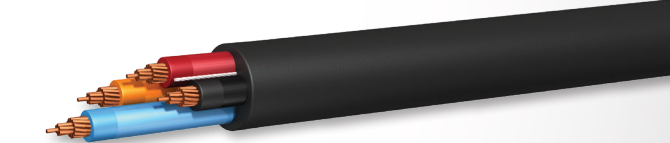
MC Fire Alarm Cable
Available in 18 AWG-2 conductor through 12 AWG-8 conductor shielded & non-shielded



MC Circuit - THHN/XHHW-2/RW90 Inners
Available in 14 AWG-2 conductor through 750 KCMIL-4 conductor with or without a PVC jacket



MC - PVC Jacket (AIA) THHN/XHHW-2/RW90 Inners
Available in 14 AWG-2 conductor through 750 KCMIL-4 conductor with or without a PVC jacket



Tray Cable - Power and Control Cable - with or without Ground - THHN/XHHW-2/RW90 Inners
Copper conductors available in 14 AWG-2 through 750 KCMIL-4, Aluminum conductors available in 6 AWG and larger



Underground/Secondary Distribution Cable (URD) - 600V
Duplex, Triplex, and Quadplex constructions available in 1350 Alloy and 8000 Series; Aluminum only

PRODUCT LINE



ENCORE WIRE®



SuperSlick Elite® Manufactured under Patent No. 8,658,576, SmartColor ID® Manufactured under Patent No. 7,954,530 & 8,454,785

SMART COLOR ID®