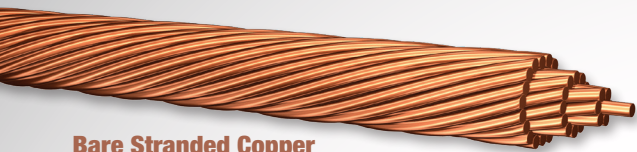


Clean Energy Products

All products listed below are available in both aluminum or copper conductors unless otherwise specified.

[CLICK ON PRODUCT TO LEARN MORE.]



Bare Stranded Copper



THHN/THWN-2



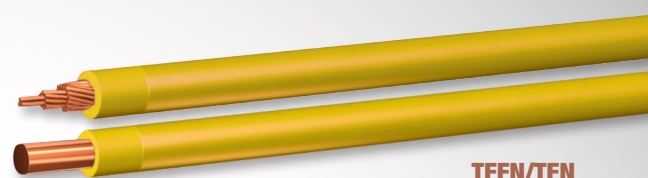
XHHW-2/RW90



USE-2/RHH/RHW-2



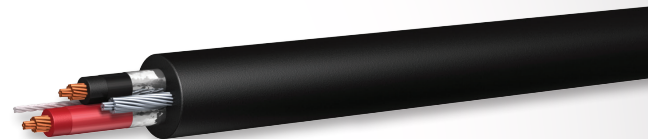
Photovoltaic
UL 4703
Aluminum available in 8 AWG or larger



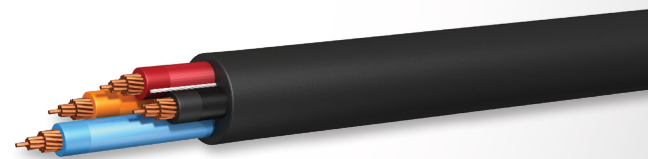
TFFN/TFN
Copper only



THW-2



**Tray Cable - Control or Instrumentation -
Shielded - THHN/XHHW-2/RW90 Inners**
Available in 18 AWG-2 conductor through
10 AWG-12 conductor; Copper only



**Tray Cable - Power and Control Cable -
with or without Ground - THHN/XHHW-2/RW90 Inners**
Copper conductors available in 14 AWG-2 through 750 KCMIL-4,
Aluminum conductors available in 6 AWG and larger

PRODUCT LINE



SmartSun®



ENCORE WIRE®

SuperSlick Elite® Manufactured under Patent No. 8,658,576



ENCORE TECHLAB®
A LEED® PLATINUM R&D CENTER