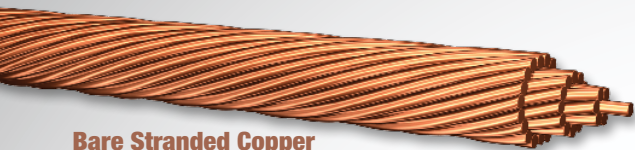


Transit Products

All products listed below are available in both aluminum or copper conductors unless otherwise specified.

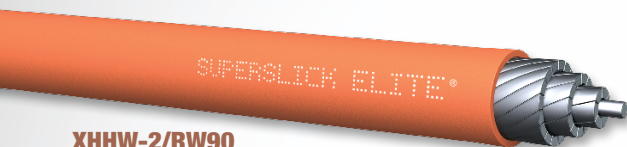
[CLICK ON PRODUCT TO LEARN MORE.]



Bare Stranded Copper



THHN/THWN-2



XHHW-2/RW90



USE-2/RHH/RHW-2



**TFN/TFFN
Copper only**



Striped Wire
Available on any single conductor wire type



MTW

PRODUCT LINE



MC-LED™ (Type MC-PCS) Lighting Cable
Aluminum or Steel Armor; Copper only



MC Fire Alarm Cable
Available in 18 AWG-2 conductor through 12 AWG-8 conductor shielded & non-shielded



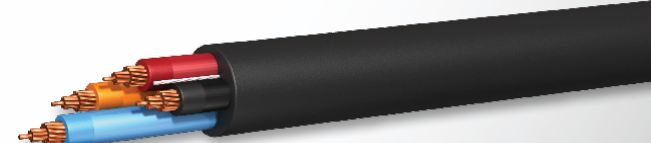
MC Circuit - THHN/XHHW-2/RW90 Inners
Available in 14 AWG-2 conductor through 750 KCMIL-4 conductor with or without a PVC jacket



MC - PVC Jacket (AIA) THHN/XHHW-2/RW90 Inners
Available in 14 AWG-2 conductor through 750 KCMIL-4 conductor with or without a PVC jacket



Tray Cable - Control or Instrumentation - Shielded - THHN/XHHW-2/RW90 Inners
Available in 18 AWG-2 conductor through 10 AWG-12 conductor; Copper only



Tray Cable - Power and Control Cable - with or without Ground - THHN/XHHW-2/RW90 Inners
Copper conductors available in 14 AWG-2 through 750 KCMIL-4, Aluminum conductors available in 6 AWG and larger



ENCORE WIRE®

SMART COLOR ID®

SuperSlick Elite® Manufactured under Patent No. 8,658,576, SmartColor ID® Manufactured under Patent No. 7,954,530 & 8,454,785