

PRODUCTS DESIGNED WITH YOUR BOTTOM LINE IN MIND.

PRODUCTS

RESIDENTIAL, COMMERCIAL & INDUSTRIAL

BOTH COPPER & ALUMINUM

- SuperSlick Elite® THWN-2/THHN (600 V)
- SuperSlick Elite® XHHW-2, USE-2 (1000 V)
- SEU & SER
- TC-ER SE-R Hybrid®
- USE-2 (600 V)
- Photovoltaic Cable (600 V & 1kV/2kV)
- Armored Cable MC & AC
THWN-2 & XHHW-2 inners
PVC-coated Aluminum and Steel Armor
- VNTC® and XLP/PVC Tray Cable
Power & Control THWN-2 & XHHW-2 inners
- 5kV to 35kV Uniblend® MV-105
Medium Voltage Power Cables

COPPER ONLY

- NM-B, NM-B PCS & UF-B
- Bare, Tracer Wire, & THW-2
- MTW, TFFN, & TFN
- MC-LED Cable
- FREP® EPR/CPE Tray Cable
- Durasheath® RHH/RHW-2/USE-2 (600-1000 V)
- DLO (2kV)
- Duralox® Industrial Interlocked Armor Cable
(600 V- 35kV)
- CCW Continuously Corrugated and Welded MC-HL Armor
Cable (600 V- 35kV)
- AIRGUARD® Polymeric TC-HL Armor Cable
(600 V- 35kV)
- TECK90 Cable
- CAROL® Portable Cord & Electronics Cable

ALUMINUM ONLY

- URD (600 V)
- MHF
- Overhead Service Drop (ACSR)

PACKAGING

PRODUCT LINE PACKAGING LINE



PullPro®

- Available in 14, 12, 10 AWG
- SuperSlick Elite® THWN-2
- Stranded and Solid



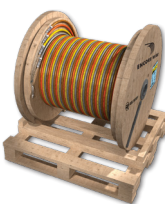
MC Barrel Pack

- 55-gallon drum
- Easy to maneuver
- Provides a smooth MC pull
- Solid only



Cyclone Barrel Pack®

- Available in 14, 12, 10 AWG
with up to 7 conductors
- SuperSlick Elite® THWN-2
- Stranded only



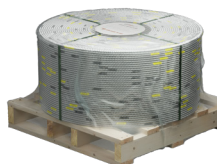
Reel Payoff®

- No jack stand needed
- 360-degree maneuverability
- Available in 6 reel sizes



Reel Payoff® Premium

- Enhanced weatherability
- More durable & easier to maneuver
- Decreased overall pulling tension
- Available in 2 reel sizes



Mega Coil®

- Longer, continuous MC runs
- Ideal for pre-fab operations
- Stack two Mega Coil® to
maximize floor space



MV Accessories

- Cold-Shrink Splices Elaseed®
(5-35kV)
- ColdFit® Cold-Shrink Terminations
(5-35kV)
- Pre-Attached Cable Pulling Lugs
- 600A/900A Deadbreak T-Bodies
(5-35kV)



NOBODY DOES IT LIKE PRYSMIAN / ENCORE WIRE.

SERVICES & CAPABILITIES

- Cut-to-length paralleling
- Twisting/cabling
- Parallel layering (Stacked runs)
- Special print legend / jacket marking
- Custom-color striping
- Custom-color PVC jacket
- Colors
- Reel shipped in roll-off position on 4-way pallets for increased maneuverability
- Weather-resistant end caps
- Wood lagging
- Make-it-American™ BABA compliant
- Environmental product declarations
- Customizable labels
- Custom-palletized orders
- Insulation-resistance testing
- Easy Glider® & SuperSlick® lube-free coating
- Pulling heads attached at factory for 8 AWG to 1000 KCMIL size range
- SmartCut® (Asterisk shows where to cut)
- SmartCount® (Reverse count)
- Sequential foot markings
- Steel reels
- Alesea asset tracking
- Industry leading fill-rates

AVAILABLE FOR SELECT PRODUCTS AND APPLICATIONS. THIS IS A SHORT LIST OF THE **SERVICES AND CAPABILITIES** THAT SET US APART AS THE LEADER IN SERVICE. PLEASE CONTACT YOUR LOCAL SALES REPRESENTATIVE FOR MORE INFORMATION.



Flexible machine time to better serve customer priorities



Our Scrap Program helps you utilize waste on job sites and put money back in your pocket



Mobile-Friendly Website & Engineering Specs



UL-certified
Prysmian NA Labs &
Encore TechLab®



na.prysmian.com | encorewire.com

