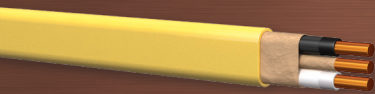




Copper Product Line



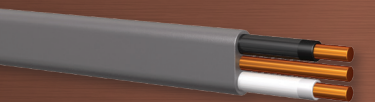
ENCORE WIRE®



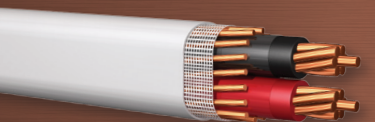
NM-B



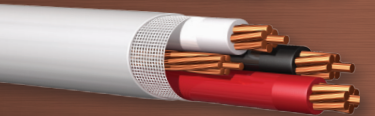
NM-B PCS



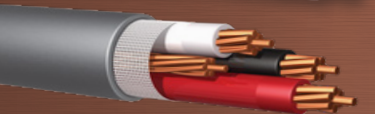
UF-B



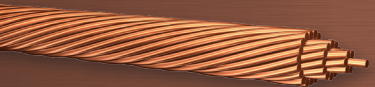
SE STYLE U



SE STYLE R



TC-ER SE-R HYBRID®



SOFT-DRAWN BARE CONDUCTOR



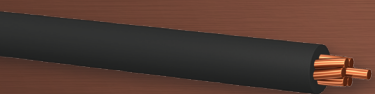
FLEXCORE®



THHN/THWN-2
Encore Wire's Patented SuperSlick Elite®



XHHW-2/RW90
Encore Wire's Patented SuperSlick Elite®



USE-2/RHH/RHW-2



PHOTOVOLTAIC



TRACER WIRE



MTW



TFFN/TFN



TW #8 SOLID GREEN

METAL-CLAD CABLE
THHN/THWN-2 OR XHHW-2 INNERS



MC-SG SMARTGROUND®
With Aluminum or Steel Armor



MC-HCF SMARTGROUND®
With Aluminum or Steel Armor



MC-LED
With Aluminum or Steel Armor



AC-HCF
With Aluminum or Steel Armor



MC-ISG
Isolated Ground



MC-MLN
Multiple Neutral



MC-FPLP
Fire Alarm & Control Cable



MC-MLC
Multi-Circuit



ARMOR-CLAD CABLE
With Aluminum or Steel Armor



METAL-CLAD CABLE WITH PVC JACKET
With Aluminum or Steel Armor



POWER & CONTROL CABLE (GROUND)
THHN/THWN-2 OR XHHW-2 INNERS



POWER & CONTROL CABLE (NO GROUND)
THHN/THWN-2 OR XHHW-2 INNERS



CAPABILITIES

RIGOROUS PRODUCT TESTING

Every finished production length of single-conductor cable is subject to, and passes, UL 2556 requirements for insulation A-C Spark test. These conductors also comprise our cabled construction products. Strict adherence to UL standards through our UL certified DAP quality control lab insures the highest possible product quality. Additional optional dielectric voltage-withstand in water testing is also available.

SUPERSLICK ELITE®

Our Patented SuperSlick Elite® (SSE) technology allows for a faster, easier pull through conduit, cable trays and raceways without the need for additional lubricant. SSE® technology is applied to THWN-2 and XHHW-2 in sizes 8 AWG through 1000 KCMIL.

COLORS

Our award-winning colors significantly increase safety on job sites by reducing the possibility of phasing mistakes. It also helps simplify complex wiring jobs as well as save time and money. We can custom color your wire to give you a competitive edge.



COPPER PRODUCTS

Encore Wire is a leading manufacturer of copper and aluminum residential, commercial and industrial building wire. Our expansive, state-of-the-art warehouse facilities allow us to engineer, manufacture, and deliver a broad range of the highest-quality products.

Residential Products:

- NM-B
- NM-B PCS
- UF-B
- SEU
- SER
- TC-ER SE-R HYBRID®

Commerical Products:

- THHN/THWN-2 SuperSlick Elite®
- XHHW-2 SuperSlick Elite®
- USE-2
- Flexcore®
- Photovoltaic
- Tracer Wire
- MTW
- TFFN/TFN

Metal-Clad Products:

- Metal-Clad Cable (with or without a PVC jacket)
- MC-SG SmartGround®
- MC-HCF SmartGround®
- MC-LED
- MC-ISG
- MC-MLN
- MC-FPLP
- MC-MLC
- Armor-Clad Cable

Industrial Products:

- Tray Cable (with or without ground)



ASK ABOUT OUR ADDED-VALUE CAPABILITIES



PARALLELS



PULLING HEADS



CUSTOM
COLORS



CUSTOM
CUTS



SMARTCUT®



All Encore Wire products are born in the USA and raised in Texas.
© 2023 Encore Wire Corporation. All Rights Reserved. Encore is a trademark of Encore Wire Corporation.
Patents: encorewire.com/patents

1.800.962.9473
encorewire.com

