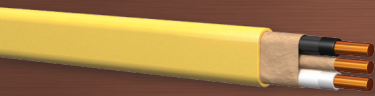
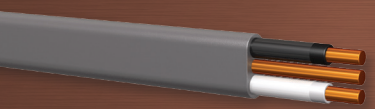




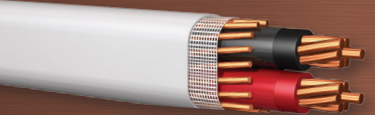
# Copper Product Line



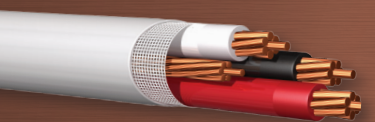
**NM-B**



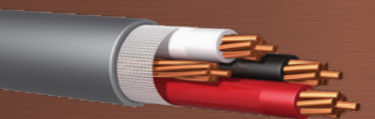
**UF-B**



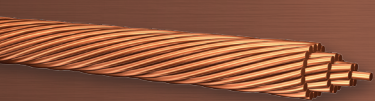
**SE STYLE U**



**SE STYLE R**



**TC-ER SE-R HYBRID®**



**SOFT-DRAWN BARE CONDUCTOR**



**FLEXCORE®**



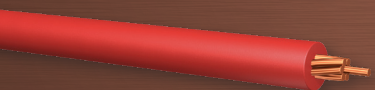
**THHN/THWN-2**  
Encore Wire's Patented SuperSlick Elite®



**XHHW-2/RW90**  
Encore Wire's Patented SuperSlick Elite®



**USE-2/RHH/RHW-2**



**PHOTOVOLTAIC**



**TRACER WIRE**



**MTW**



**TFFN/TFN**



**TW #8 SOLID GREEN**

**METAL-CLAD CABLE**  
THHN/THWN-2 OR XHHW-2 INNERS



**MC-SG SMARTGROUND®**  
With Aluminum or Steel Armor



**MC-HCF SMARTGROUND®**  
With Aluminum or Steel Armor



**MC-LED**  
With Aluminum or Steel Armor



**AC-HCF**  
With Aluminum or Steel Armor



**MC-ISG**  
Isolated Ground



**MC-MLN**  
Multiple Neutral



**MC-FPLP**  
Fire Alarm & Control Cable



**MC-MLC**  
Multi-Circuit



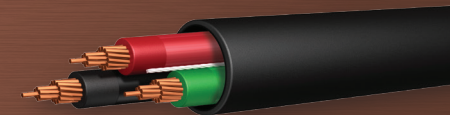
**ARMOR-CLAD CABLE**  
With Aluminum or Steel Armor



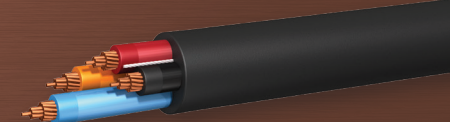
**METAL-CLAD CABLE  
WITH PVC JACKET**  
With Aluminum or Steel Armor



**POWER & CONTROL CABLE (GROUND)**  
THHN/THWN-2 OR XHHW-2 INNERS



**POWER & CONTROL CABLE (NO GROUND)**  
THHN/THWN-2 OR XHHW-2 INNERS





## CAPABILITIES

### RIGOROUS PRODUCT TESTING

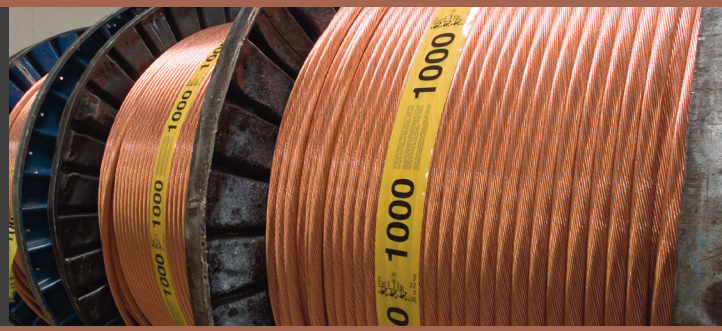
Every finished production length of single-conductor cable is subject to, and passes, UL 2556 requirements for insulation A-C Spark test. These conductors also comprise our cabled construction products. Strict adherence to UL standards through our UL certified DAP quality control lab insures the highest possible product quality. Additional optional dielectric voltage-withstand in water testing is also available.

### SUPERSLICK ELITE®

Our Patented SuperSlick Elite® (SSE) technology allows for a faster, easier pull through conduit, cable trays and raceways without the need for additional lubricant. SSE® technology is applied to THWN-2 and XHHW-2 in sizes 8 AWG through 1000 KCMIL.

### COLORS

Our award-winning colors significantly increase safety on job sites by reducing the possibility of phasing mistakes. It also helps simplify complex wiring jobs as well as save time and money. We can custom color your wire to give you a competitive edge.



## COPPER PRODUCTS

Encore Wire is a leading manufacturer of copper and aluminum residential, commercial and industrial building wire. Our expansive, state-of-the-art warehouse facilities allow us to engineer, manufacture, and deliver a broad range of the highest-quality products.

#### Residential Products:

- NM-B
- UF-B
- SEU
- SER
- TC-ER SE-R HYBRID®

#### Commerical Products:

- THHN/THWN-2 SuperSlick Elite®
- XHHW-2 SuperSlick Elite®
- USE-2
- Flexcore®
- Photovoltaic
- Tracer Wire
- MTW
- TFFN/TFN

#### Metal-Clad Products:

- Metal-Clad Cable (with or without a PVC jacket)
- MC-SG SmartGround®
- MC-HCF SmartGround®
- MC-LED
- MC-ISG
- MC-MLN
- MC-FPLP
- MC-MLC
- Armor-Clad Cable

#### Industrial Products:

- Tray Cable (with or without ground)



## ASK ABOUT OUR ADDED-VALUE CAPABILITIES



All Encore Wire products are born in the USA and raised in Texas.  
© 2023 Encore Wire Corporation. All Rights Reserved. Encore is a trademark of Encore Wire Corporation.  
Patents: [encorewire.com/patents](https://encorewire.com/patents)

1.800.962.9473  
[encorewire.com](https://encorewire.com)

