

## Industrial & Construction Product Offering

Prysmian | Encore Wire is dedicated to manufacturing high-quality wire and cable products from brands you know and trust.



### Residential Wire & Cable



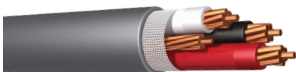
UF-B



NM-B



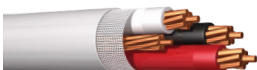
NM-B PCS



TC-ER SE-R Hybrid® also available in Aluminum



SE-U also available in Aluminum



SE-R also available in Aluminum



Mobile Home Feeder

### Commercial Wire & Cable



THHN/THWN-2, USE-2, XHHW-2, MTW; also available in Aluminum



1000V XHHW-2 CT Rated; also available in Aluminum



Metal-Clad Cable THHN/THWN-2 or XHHW-2 Inners; also available in Aluminum



URD

### Industrial Power Cable



600V/1000V RHH/RHW/USE-2



600V/1000V Instrumentation, Power & Control, Shielded & Unshielded

### Industrial continued



600V/1000V Tray Cable THHN/THWN-2 or XHHW-2 Inners; also available in Copper, insulated with or without ground



2000V (XLPE/PVC), VFD, TYPE TC-ER



2.4kV, EPR, MV-90



5-35kV 1/C, EPR, MV-105 (Tape Shield)



5-35kV 3/C, EPR, MV-105, Power



5-35kV 1/C, TRXLPE, MV-90 (Tape Shield)



5-35kV 3/C, TRXLPE, MV-90, Power



DLO

### Armored Cable



Feeder MC also available in Copper, with or without PVC, with Aluminum or Steel Armor



600V Multiconductor TECK90



1kV 1/C TECK90



1kV Multiconductor TECK90



5-46kV 1/C, TRXLPE, HVTECK (MV)

### Armored continued



5-46kV 3/C, TRXLPE, HVTECK (MV)



600V/1000V 3/C, XLPE, Type MC



600V/1000V Low AIRGUARD® - Power, VFD, Instrumentation and Control



600V/1000V 3/C AIRGUARD® Cable, Type TC-ER-HL



5-138kV 3/C, AIRGUARD® MV-105



600V/1000V XLPE/AIA/PVC



5-35kV 3/C, EPR/AIA/PVC, MV-105, Power



600V/1000V Instrumentation, Power & Control CCW, VFD



600V/1000V/2000V 3/C CCW Cable, MC-HL, VFD



5-35kV CCW Power, MC-HL

### Renewables



6-50kV, MV, single core or three cores; also available in Copper



600V/1kV/2kV Photovoltaic

## Portable Cord / Temp Power



300/600V Portable/Temp Power  
- SO, SJ, SE, SJE



Welding (UL and Non-UL)



Cordsets



2kV Type W, Type G & Type GC



Stage and Lighting



Type MTW (UL 1015/CSA)

## Electronics / Communications



Alarm and Security



Fire Alarm Solid FPLP & FPLR



Comm & Control



Category



Coax



Access Control / OSDP

## Accessories

### SPLICES AND TERMINATIONS



5-35kV Elaseed<sup>®</sup> Cold-Shrink Splices



5-35kV ColdFit<sup>®</sup> Cold-Shrink Terminations

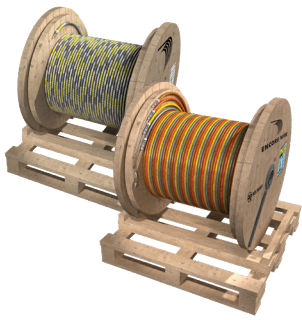


Pre-Attached Cable Pulling Lugs



5-35kV 600A/900A Deadbreak T-Bodies

## Packaging Solutions



The Reel Payoff<sup>®</sup> eliminates any need for jack stands and saves up to 70% on set up time. The Reel Payoff is shipped on our specially designed cradle pallets in roll-off position.

- Available with THWN-2, XHHW-2, MC, Tray Cable, NM-B
- Reel Sizes 24, 30, 32, 36, 42, and 48



Encore Wire's new Reel Payoff<sup>®</sup> Premium is more durable with enhanced weatherability to get more pulls! It includes a metal band and metal drum that is pre-cut with wire-tail slots to accommodate virtually any wire size.

- Available with THHN/THWN-2, XHHW-2, MC, Tray Cable
- Reel Sizes 48 and 55



The Cyclone Barrel Pack<sup>®</sup> provides a tangle free pull without the need for additional tools. It's easy to maneuver and the cable can be paid out in a 360° radius.

- Sizes 14 AWG through 10 AWG
- Stranded only, up to 7 conductors



The re-engineered PullPro<sup>®</sup> gives you an extra circuit run to help finish the job or start a new one. The shrink-wrapped inner coil allows wire to be pulled with or without the case.

- Available in THHN/THWN-2
- Sizes 14 AWG 2x1500', 12 AWG 2x1250', 10 AWG 2x750'
- Solid and Stranded



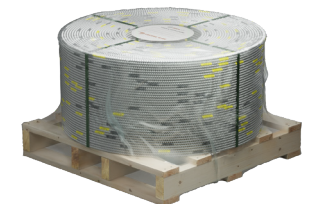
The Metal Clad Barrel Pack provides a tangle free pull without the need for additional tools. It's easy to maneuver and the cable can be paid out in a 360° radius.

- 12/2 SOL MC/AL 2750'
- 12/2 SOL MC/AL SG 2400'
- 12/2 SOL MC/AL LED 1800'
- Solid only



Encore Wire's new Mega Coil<sup>®</sup> pulls clean and easy while keeping its shape throughout its use. With even longer, continual metal-clad runs, processes are streamlined and scrap is reduced while saving valuable floor space.

- 14/2 SOL MC/AL 9000', 14/3 STR MC/AL 8400', 12/2 SOL MC/AL 8000', 12/3 STR MC/AL 7000'
- Solid and Stranded



© 2026 Prysmian | Encore Wire

All Rights Reserved.  
Patents: encorewire.com/patents

prysmian | ENCORE WIRE<sup>®</sup>

1.800.962.9473 | encorewire.com

+1.859.572.8000 | na.prysmian.com