

Type ABR Flexible Conduit

This non-jacketed flexible aluminum conduit has many universal wiring applications. It is often referred to as "Greenfield" or "Reduced Wall Flex".

CONSTRUCTION:

Type ABR is formed using a high strength aluminum alloy strip. The result is a conduit with similar characteristics to those of type BR steel but at about 1/3 the weight. Meets Federal Specification AA-55810 Type II (formerly WW-C-566c Type I).

APPLICATION:

This conduit is intended for installation as a metal raceway for wires and cable in accordance with NEC (ANSI/NFPA-70) Article 348.

- Suitable as an equipment grounding conductor (Section 250.118(5))
- Wiring in elevators, hoist ways and escalators (Section 620.21(A))
- Use of 3/8 inch trade size (Section 348.20)
 - Leads of Motors (Section 430.145(b))
 - Listed Assemblies, Tap Conductors (Section 410.67c)
 - Manufactured Wiring Systems (Section 604.6(a))
 - Listed Wired Fixtures (Section 410.77c)
- Suitable for use with listed connectors intended for "FMC" (Flexible Metal Conduit)
- Also permitted for use on industrial machinery (ANSI/NFPA-79) Section 14.5.4

INDUSTRY APPROVALS



#E53253
(sizes 3/8 & 1/2 through 3 inch)
Conforms to Underwriters Laboratories Standard ANSI/UL-1 for Flexible Metal Conduit.



Certified File #LL18858
(3/8 & 7/16 inch size only) Conforms to CSA 22.2 No. 56 for use per the Canadian electrical code C22.1 Section 12-1000.



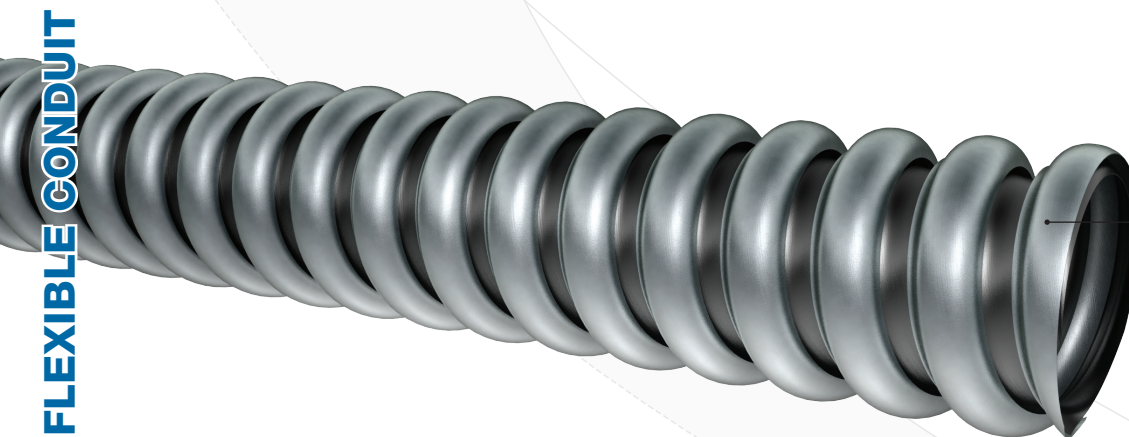
This product conforms to RoHS guidelines



WEEE Compliant

Type ABR Flexible Conduit

Size (in)	Type	Inside Radius (in)	Inner Diameter		Outer Diameter		Weight (lbs/100 ft)	Standard Packaging	
			Min (in)	Max (in)	Min (in)	Max (in)		Coil (ft)	Reel (ft)
3/8"	ABR-10	2.0"	0.375	0.393	0.560	0.610	7	25' 50' 100'	1000'
7/16"	ABR-716	2.25"	0.437	0.457	-	0.675	7.7	25' 50' 100'	1000'
1/2"	ABR-11	3.0"	0.625	0.645	0.860	0.920	9.5	25' 50' 100'	1000'
3/4"	ABR-12	4.0"	0.812	0.835	1.045	1.105	13.5	25' 50' 100'	500'
1"	ABR-13	5.0"	1.000	1.040	1.300	1.380	18	50'	400'
1 1/4"	ABR-14	6.2"	1.250	1.300	1.550	1.630	22	50'	400'
1 1/2"	ABR-15	7.5"	1.500	1.575	1.850	1.950	26	25'	300'
2"	ABR-16	10.0"	2.000	2.080	2.350	2.454	35	25'	150'
2 1/2"	ABR-17	12.5"	2.500	2.700	2.860	3.060	57	25'	-
3"	ABR-18	15.0"	3.000	3.200	3.360	3.560	70	25'	-
3 1/2"	ABR-350	17.5"	3.500	-	3.860	4.060	58	25'	-
4"	ABR-19	20.0"	4.000	-	4.360	4.560	70	25'	-



High Strength Aluminum Alloy