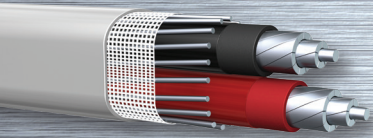
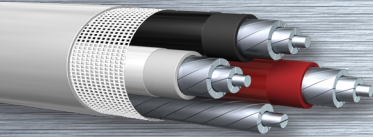




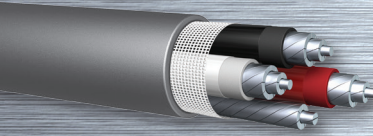
Aluminum Product Line



Type SE-U



Type SE-R



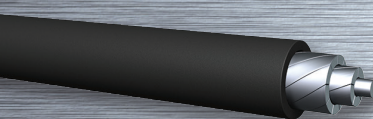
Type TC-ER-SER Hybrid®



THHN/THWN-2
Encore Wire's Patented SuperSlick Elite®



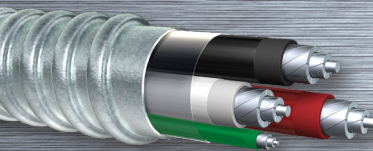
XHHW-2
Encore Wire's Patented SuperSlick Elite®



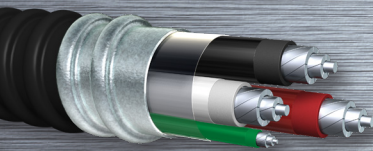
USE-2



Photovoltaic



**MC Cable
with THWN-2 Inners**
Available in Steel or Aluminum Armor

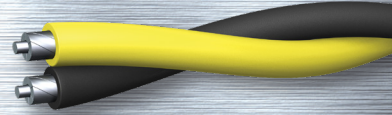


**PVC Jacketed MC Cable
with THWN-2/XHHW-2 Inners**
Available in Steel or Aluminum Armor

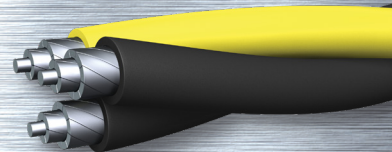
**Single Conductor Underground
Distribution Cable**
Available in Single-Rated Only



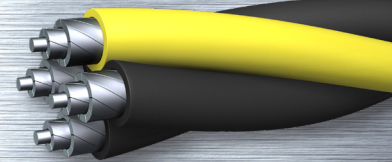
**Duplex Underground
Distribution Cable**
Available in Single-Rated or Triple-Rated



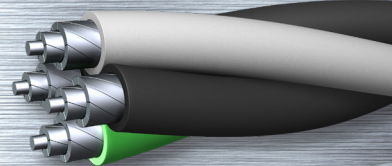
**Triplex Underground
Distribution Cable**
Available in Single-Rated or Triple-Rated



**Quadruplex Underground
Distribution Cable**
Available in Single-Rated or Triple-Rated



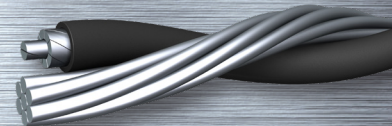
Mobile Home Feeder Cable



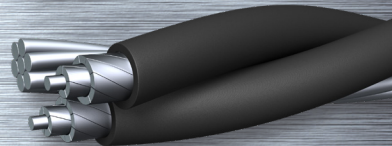
**Bare Overhead
Supporting Neutral**
ACSR Construction



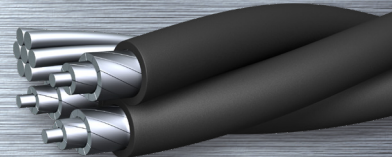
**Duplex Overhead
Service Drop**
ACSR Construction



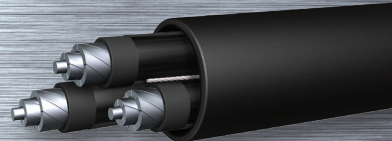
Triplex Overhead Service Drop
ACSR Construction



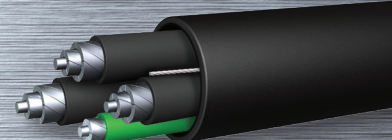
**Quadruplex Overhead
Service Drop**
ACSR Construction



**Tray Cable
with THHN/THWN-2 Inners**
With or Without Ground



**Tray Cable
with XHHW-2 Inners**
With or Without Ground



CAPABILITIES

RIGOROUS PRODUCT TESTING

Every finished production length of single-conductor cable is subject to, and passes, UL 2556 requirements for insulation A-C Spark test. These conductors also comprise our cabled construction products. Strict adherence to UL standards through our UL certified DAP quality control lab insures the highest possible product quality. Additional optional dielectric voltage-withstand in water testing is also available.

SUPERSLICK ELITE®

Our Patented SuperSlick Elite® (SSE) technology allows for a faster, easier pull through conduit, cable trays and raceways without the need for additional lubricant. SuperSlick Elite® technology is applied to THWN-2 and XHHW-2 in sizes 8 AWG through 1000 KCMIL.

COLORS

Our award-winning colors significantly increase safety on job sites by reducing the possibility of phasing mistakes. It also helps simplify complex wiring jobs as well as save time and money. We can custom color your wire to give you a competitive edge.

ALUMINUM PLANT

Built in 2012 and expanded in 2014 and again in 2024, Encore Wire's aluminum plant features state-of-the-art equipment to produce top-of-the-line aluminum wire products and enable us to deliver them faster than anyone in the industry. This plant has the capability to draw, strand, insulate and jacket single or multi-conductor aluminum wire as finished products in sizes 8 AWG through 1000 KCMIL.

Single-conductor insulated aluminum products from this plant include:

- THHN/THWN-2 SuperSlick Elite®
- XHHW-2 SuperSlick Elite®
- USE-2
- Photovoltaic
- Single Conductor Underground Distribution Cable
- Bare Neutral Overhead Service Drop Cable

Multi-Conductor products produced in this plant include:

- SEU
- SER
- TC-ER-SER Hybrid®
- Mobile Home Feeder (MHF)
- Underground Distribution Cable (1350 and 8000 series alloy)
- Overhead Service Drop (OH)
- Metal-Clad Cable (with or without a PVC jacket)
- Tray Cable



ASK ABOUT OUR ADDED-VALUE CAPABILITIES



All products manufactured at our McKinney, TX campus are born in the USA and raised in Texas.
© 2025 Encore Wire Corporation. All Rights Reserved. Encore Wire is a Prysmian Company.
Patents: encorewire.com/patents

1.800.962.9473
encorewire.com

