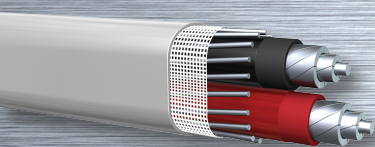
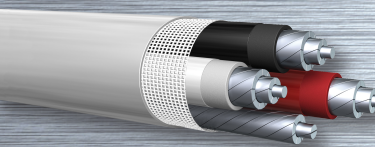




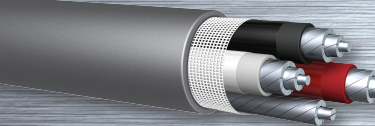
Aluminum Product Line



Type SE-U



Type SE-R



Type TC-ER-SER Hybrid



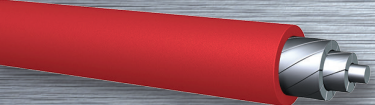
THHN/THWN-2
Encore's Patented SuperSlick Elite®



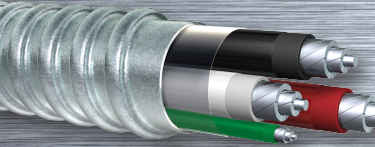
XHHW-2
Encore's Patented SuperSlick Elite®



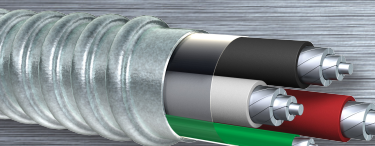
USE-2



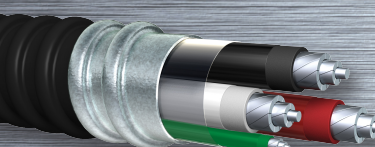
Photovoltaic



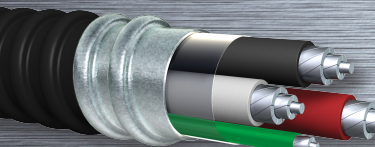
**MC Cable
with THHN/THWN-2 Inners**
Available in Steel or Aluminum Armor



**MC Cable
with XHHW-2 Inners**
Available in Steel or Aluminum Armor



**PVC Jacketed MC Cable
with THHN/THWN-2 Inners**
Available in Steel or Aluminum Armor



**PVC Jacketed MC Cable
with XHHW-2 Inners**
Available in Steel or Aluminum Armor

**Single Conductor Underground
Distribution Cable**
Available in Single-Rated Only

**Duplex Underground
Distribution Cable**
Available in Single-Rated or Triple-Rated

**Triplex Underground
Distribution Cable**
Available in Single-Rated or Triple-Rated

**Quadruplex Underground
Distribution Cable**
Available in Single-Rated or Triple-Rated

Mobile Home Feeder Cable

**Bare Overhead
Supporting Neutral**
ACSR Construction

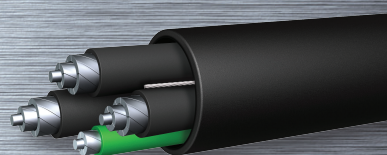
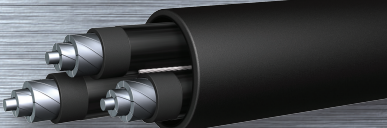
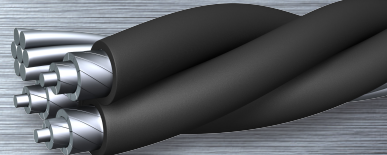
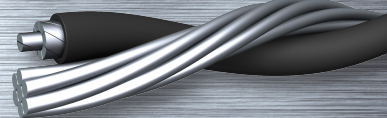
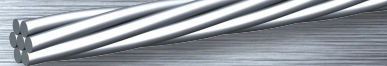
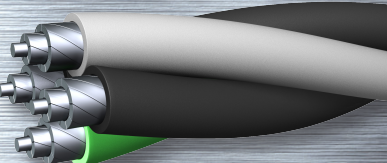
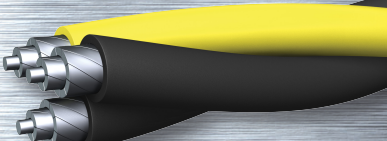
**Duplex Overhead
Service Drop**
ACSR Construction

Triplex Overhead Service Drop
ACSR Construction

**Quadruplex Overhead
Service Drop**
ACSR Construction

**Tray Cable
with THHN/THWN-2 Inners**
With or Without Ground

**Tray Cable
with XHHW-2 Inners**
With or Without Ground



CAPABILITIES

RIGOROUS PRODUCT TESTING

All of our cut and finished reels produced with a cross-link polyethylene (XLPE) insulation undergo an additional UL Insulation Resistance-in-Water Test, ensuring that your product is thoroughly insulated to our highest standards.

SUPERSLICK ELITE®

Our Patented SuperSlick Elite (SSE) technology allows for a faster, easier pull through conduit, cable trays and raceways without the need for additional lubricant. SSE® technology is applied to THWN-2 and XHHW-2 in sizes 8 AWG through 1000 KCMIL.

COLORS

Our award-winning colors significantly increase safety on job sites by reducing the possibility of phasing mistakes. It also helps simplify complex wiring jobs as well as save time and money. We can custom color your wire to give you a competitive edge.

ALUMINUM PLANT

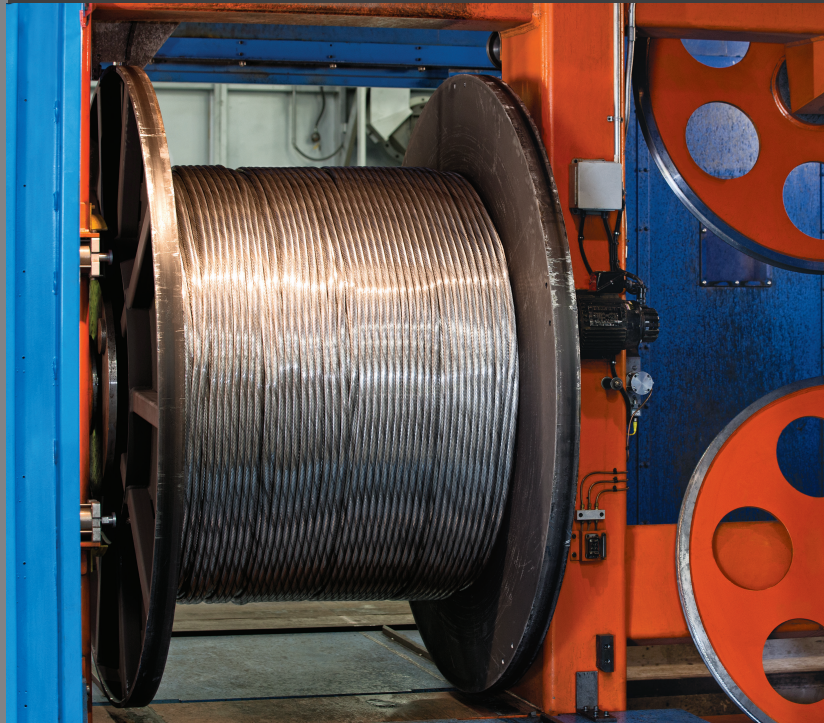
Built in 2012 and expanded in 2015, Encore's aluminum plant features state-of-the-art equipment to produce top-of-the-line aluminum wire products and enable us to deliver them faster than anyone in the industry. This plant has the capability to draw, strand, insulate and jacket single or multi-conductor aluminum wire as finished products in sizes 8 AWG through 1000 KCMIL.

Single-conductor insulated aluminum products from this plant include:

- THHN/THWN-2 SuperSlick Elite®
- XHHW-2 SuperSlick Elite®
- USE-2
- Photovoltaic
- Single Conductor Underground Distribution Cable
- Bare Neutral Overhead Service Drop Cable

Multi-Conductor products produced in this plant include:

- SEU
- SER
- TC-ER-SER Hybrid
- Mobile Home Feeder (MHF)
- Underground Distribution Cable (1350 and 8000 series alloy)
- Overhead Service Drop (OH)
- Metal-Clad Cable (with or without a PVC jacket)
- Tray Cable



ASK ABOUT OUR ADDED-VALUE CAPABILITIES



All Encore Wire products are born in the USA and raised in Texas.
© 2021 Encore Wire Corporation. All Rights Reserved. Encore is a trademark of Encore Wire Corporation.

1.800.962.9473
encorewire.com

