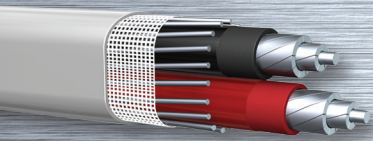


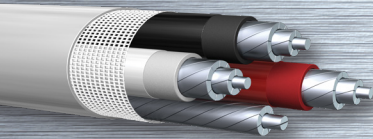


Aluminum Product Line

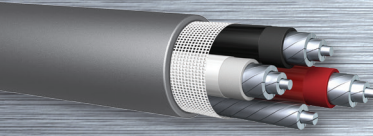
prysmian | ENCORE WIRE®



Type SE-U



Type SE-R



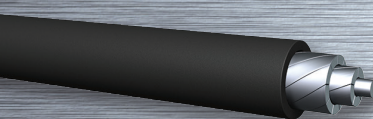
Type TC-ER-SER Hybrid®



THHN/THWN-2
Encore Wire's Patented SuperSlick Elite®



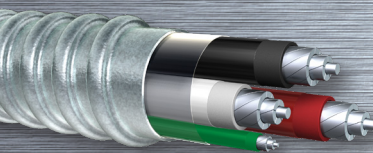
XHHW-2
Encore Wire's Patented SuperSlick Elite®



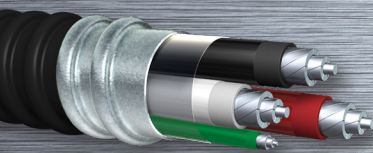
USE-2



Photovoltaic



MC Cable with THWN-2 Inners
Available in Steel or Aluminum Armor



PVC Jacketed MC Cable with THWN-2/XHHW-2 Inners
Available in Steel or Aluminum Armor

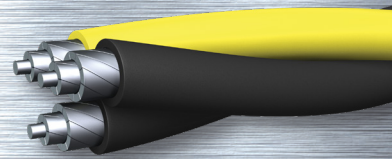
Single Conductor Underground Distribution Cable
Available in Single-Rated Only



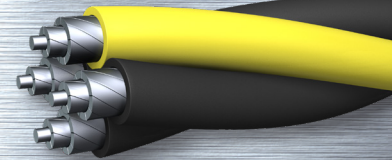
Duplex Underground Distribution Cable
Available in Single-Rated or Triple-Rated



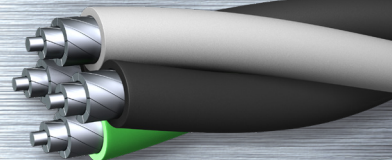
Triplex Underground Distribution Cable
Available in Single-Rated or Triple-Rated



Quadruplex Underground Distribution Cable
Available in Single-Rated or Triple-Rated



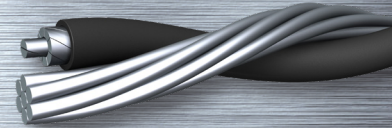
Mobile Home Feeder Cable



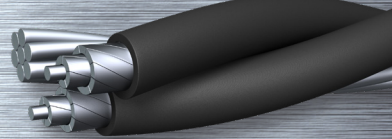
Bare Overhead Supporting Neutral
ACSR Construction



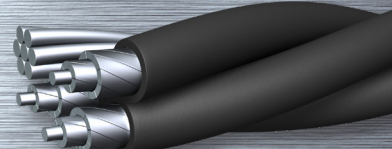
Duplex Overhead Service Drop
ACSR Construction



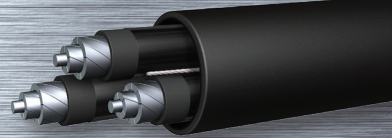
Triplex Overhead Service Drop
ACSR Construction



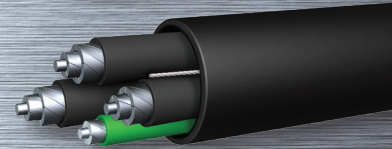
Quadruplex Overhead Service Drop
ACSR Construction



Tray Cable with THHN/THWN-2 Inners
With or Without Ground



Tray Cable with XHHW-2 Inners
With or Without Ground



CAPABILITIES

RIGOROUS PRODUCT TESTING

Every finished production length of single-conductor cable is subject to, and passes, UL 2556 requirements for insulation A-C Spark test. These conductors also comprise our cabled construction products. Strict adherence to UL standards through our UL certified DAP quality control lab insures the highest possible product quality. Additional optional dielectric voltage-withstand in water testing is also available.

SUPERSLICK ELITE®

Our Patented SuperSlick Elite® (SSE) technology allows for a faster, easier pull through conduit, cable trays and raceways without the need for additional lubricant. SuperSlick Elite® technology is applied to THWN-2 and XHHW-2 in sizes 8 AWG through 1000 KCMIL.

COLORS

Our award-winning colors significantly increase safety on job sites by reducing the possibility of phasing mistakes. It also helps simplify complex wiring jobs as well as save time and money. We can custom color your wire to give you a competitive edge.

ALUMINUM PLANT

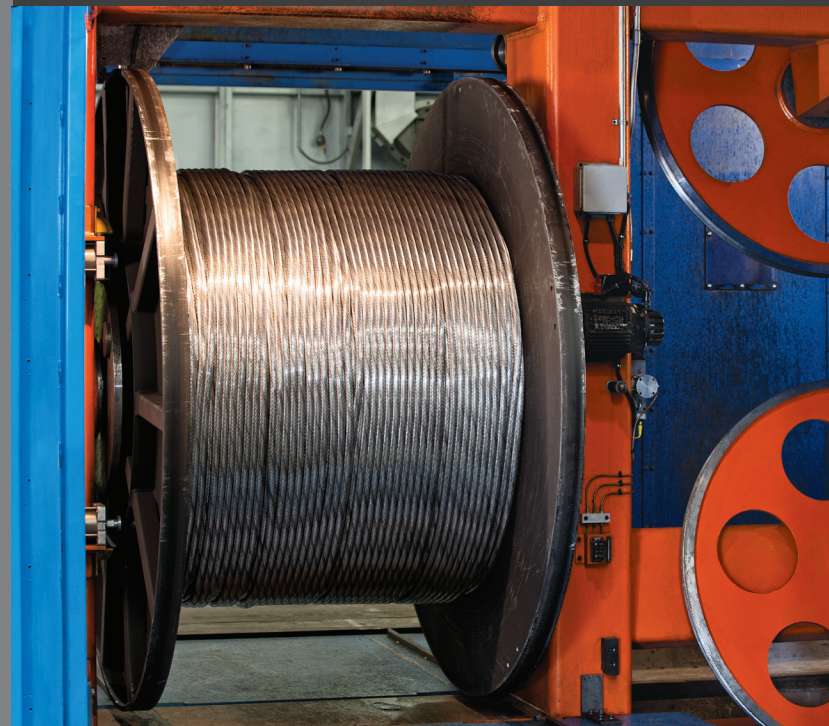
Built in 2012 and expanded in 2014 and again in 2024, Encore Wire's aluminum plant features state-of-the-art equipment to produce top-of-the-line aluminum wire products and enable us to deliver them faster than anyone in the industry. This plant has the capability to draw, strand, insulate and jacket single or multi-conductor aluminum wire as finished products in sizes 8 AWG through 1000 KCMIL.

Single-conductor insulated aluminum products from this plant include:

- THHN/THWN-2 SuperSlick Elite®
- XHHW-2 SuperSlick Elite®
- USE-2
- Photovoltaic
- Single Conductor Underground Distribution Cable
- Bare Neutral Overhead Service Drop Cable

Multi-Conductor products produced in this plant include:

- SEU
- SER
- TC-ER-SER Hybrid®
- Mobile Home Feeder (MHF)
- Underground Distribution Cable (1350 and 8000 series alloy)
- Overhead Service Drop (OH)
- Metal-Clad Cable (with or without a PVC jacket)
- Tray Cable



ASK ABOUT OUR ADDED-VALUE CAPABILITIES



PARALLELS



PULLING HEADS



CUSTOM
COLORS



CUSTOM
CUTS



SMARTCUT®



All products manufactured at our McKinney, TX campus are born in the USA and raised in Texas.
© 2026 Encore Wire Corporation. All Rights Reserved. Encore Wire is a Prysmian Company.
Patents: [encorewire.com/patents](https://www.encorewire.com/patents)

1.800.962.9473
[encorewire.com](https://www.encorewire.com)

